

PRIMARY WORK BOOK

ESSENTIAL BACK UP TOOL FOR SUCCESS

ESSENTIAL BACK UP TOOL FOR SUCCESS IS A SERIES OF LEARNING THE SOURCE MATERIALS ORGANISED FOR USE AFTER THE TEACHER HAS INTRODUCED AND EXPLAINED THE CONCEPT TO THE LEARNER.

ESSENTIAL BACK UP TOOL FOR SUCCESS COVERS PRIMARY SYLLABUS FROM **PRIMARY ONE TO PRIMARY SEVEN** IN ALL SUBJECT ASPECTS THAT IS ENGLISH, SOCIAL STUDIES, INTEGRATED SCIENCE, MATHEMATICS, LITERACY (FOR LOWER CLASSES) AND RELIGIOUS EDUCATION.

THIS TOOL IS WELL SUMMARISED WITH RELEVANT EXPLANATIONS, FOLLOW UP EXERCISES AND ACTIVITIES IN LINE WITH TERM ONE WORK AS PRESCRIBED BY THE NATIONAL CURRICULUM DEVELOPMENT CENTER , UGANDA.

EACH OF THE ABOVE ASPECTS HAS A VARIETY OF DIFFERENT FORMS OF ACTIVITIES TO ENHANCE MASTERY.

THIS WORK BOOK IS ORGANISED BY MARKS GATE INTERNATIONAL IN CORROBORATION WITH STANDARD HIGH SCHOOL ZZANA (STAHIZA)

THIS TOOL HAS SERIES IN TERMS THAT IS (TERM ONE, TERM TWO, TERM THREE)

Here in is an extract of the material that compose a whole book. In case you are interested in the complete sets of books, contact;

0772511120/0705283741

PRIMARY TWO LITERACY WORK BOOK FOR TERM ONE

Theme: **Our school and neighborhood**

SubTheme: **Name of our school and location**

Vocabulary

- school
- knowledge
- place
- road
- town
- district
- urban council
- zone
- location

A school is a place where we go to get knowledge.

Outstanding features in the school neighborhood

Vocabulary

- features
- neighborhood
- garage
- valley
- hill
- field

A neighbor is a person who lives near you.

A neighborhood is an area around us.

Outstanding features in the school neighborhood are the important things near our school

Example are:

Other schools, hospitals, churches, mosques, valleys, market, gardens, roads

Evaluation exercise

1. What is a school?

2. Write the name of our school.

3. Along which road is our school located? _____

4. Mention the district in which your school is located. _____

5. Fill in the missing letters.

b__nk

m__rk__t

v__ll__y

g__r__g__

h__sp__t__l

m__sq__e

6. Draw these features found in the school neighbourhood

church	Hill	road	mosque

Sub Theme: School symbols (attributes)

Vocabulary

Symbol, attributes, anthem, statement, badge

A school symbol is something that makes a school different from others.

Examples of school symbols include

- school uniforms
- school anthem
- school mission
- school badge
- school prayer
- school flag

Evaluation

1. Write these words correctly.

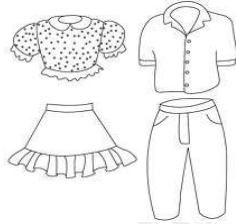
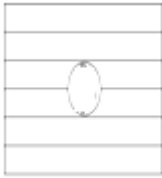
a) gedba

c) algf

b) emthan

d) erypra

2. Name these school symbols.



3. Write your school motto. _____

4. Mention any three things that make your school different from others.

i) _____

ii) _____

iii) _____

Importance of symbols

Vocabulary

- unite
- fear
- grey
- yellow
- encourage
- white
- black

Importance of school symbols

- The school motto encourages us to work harder.
- The prayer unites and teaches us to fear God
- The badge helps people to know the name of the school and motto.
- The and sign post help people to locate our school

Activity

1. State the importance of each of these symbols.

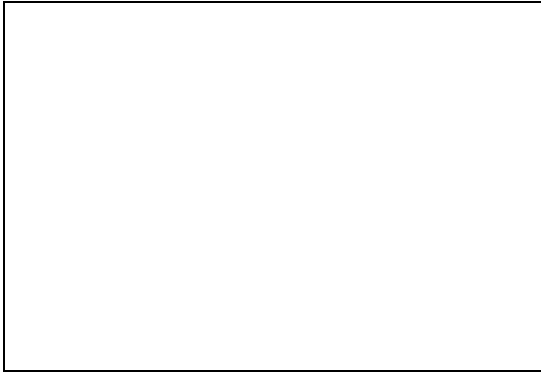
- a) school sign post _____
- b) uniform _____
- c) prayer _____

2. Write down the colours of your school uniform.

- i) _____
- ii) _____
- iii) _____

3. Name the special song sang on school assembly.

4. Draw and name the colours of our school flag.



5. Mention one thing that help to locate our school.

School structures (Buildings)

Vocabulary

- store
- kitchen
- library
- bathroom
- sickbay
- latrine
- dormitory

- a) Classroom: It's where pupils learn from.
- b) Store: It's where school property is kept.
- c) Kitchen: It's where food is prepared from.
- d) Office: It's where the head teacher, Deputy head teacher, bursar and secretaries do their work from.
- e) Bathroom: It's where we bathe from.
- f) Toilet or latrine: It's where we dispose faeces from.
- g) Sickbay: It's where sick pupils are cared for.
- h) Dormitory: It's where boarding pupils sleep.
- i) Library: It's where readers and text books are kept.

Evaluation exercise

1. Fill in the missing letters

a) st__r__

d) l__br__ry

b) of__ic__

e) d__rm__t__ry

c) t__il__t

f) s__ckb__y

2. How important is each of these structures to your school?

a) office _____

b) library _____

c) classroom _____

d) kitchen _____

3. Mention the work place of each of the following people.

a) nurse _____

b) head teacher _____

c) cooks _____

d) storekeeper _____

e) teachers _____

Sub Theme: Building materials

Vocabulary

- weak
- tarpaulin
- igloo
- reeds
- Eskimos
- strings
- cow dung
- caravan

Weak materials

These are used in construction of temporary houses like huts, tents and igloos

Examples of weak materials

- banana leaves
- banana fibres
- poles
- mud
- tarpaulin
- cow dung
- palm leaves
- grass
- sticks
- reeds
- ropes
- sisal strings
- papyrus reeds
- ice blocks

Strong building materials

Vocabulary

- mesh
- metallic
- wire
- bars
- bungalow
- permanent
- construction

They are used in construction of strong or permanent houses like bungalows and flats (storied building)

Examples of strong materials

- cement
- sand
- tiles
- bricks
- iron bars
- wire mesh
- stones
- nails
- metallic bars
- iron bars
- iron sheets
- timber

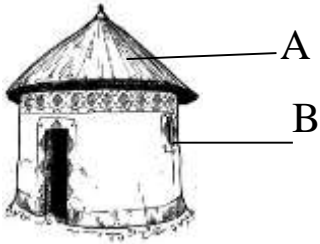
Why people build houses

- To sleep in
- To keep in their property
- To protect themselves from bad people, wild animals and bad weather

Evaluation exercise

1. Mention any two examples of temporary houses.

2. Below is a picture of a house. Study it and answer questions that follow.



a) Name the house shown above.

b) Mention any two materials that are used to construct part A.

c) Identify one use of the above house to people.

d) Name parts labeled B and A

e) Draw and name two materials that can be used to construct part B

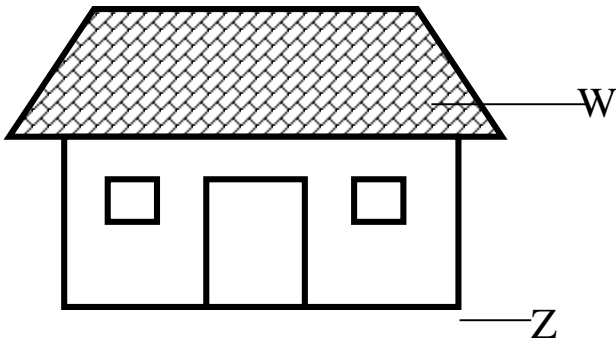
3) Which people sleep in Igloos?

1. State two examples of permanent houses.

a) _____

b) _____

2. The picture shown below is of a house. Study it carefully and answer questions that follow.



- a) Name the house shown. _____
- b) Name the part marked W. _____
- c) Identify and name the materials that can be used to construct part W. _____
- d) Name part marked Z. _____
- e) Draw and name three materials that can be used to construct part Z.
- f) State two reasons why people build houses.

Sub Theme: Groups of people found in our school

Vocabulary

- head teacher
- cook
- nurse
- bursar
- secretary
- matron
- watchman
- store keeper
- gate keeper

Roles played by different people in our school

- Head teacher -heads the school
- Deputy Head teacher -helps the head teacher
- Teachers -teach children
- Secretaries -type homework, exams and letters
- Bursar -collects school fees
- Watchman -protects the school and its property or guards the school
- Cooks -prepare meals
- Nurses -care for the sick pupils
- Store keeper -cares for school property
- Matrons(dormitory mothers) -care for boarders
- Gatekeeper -opens and closes the gate
- Pupils -learns

Evaluation exercise

1. How are these people important to our school?

a) cleaners _____

b) nurse _____

c) bursar _____

2. State the role played by each of these people in our school.

- a) secretary _____
- b) store keeper _____
- c) gatekeeper _____

3. Why do we need teachers at school?

4. How is a cook important to us?

5. What is the role of a head teacher?

Sub Theme: Pupils' roles and responsibility in side classroom

Vocabulary

- mop
- dust
- furniture
- maintain
- slashing
- rubbish
- burn
- environment
- compound

The prefects' body

- head prefect
- mess prefect
- head monitor
- scouts prefect
- health prefect/sanitary prefect
- time keeper

The major role of prefects is to help the teachers maintain order in the school.

Roles of pupils in classroom

- To mop the classroom
- To sweep the classroom
- To dust the tables , chairs, window seals and pens
- To arrange tables and chairs

- To give out or serve books

Roles of pupils outside the classroom

Keeping the compound clean by:-

- slashing the tall grass
- picking the littered rubbish
- sweeping the compound
- burning the rubbish

NB: What you have finished is a **small part** of the material that compose a **whole book**. In case you are **interested** in the complete set of this book, contact; **0772 511 120/ 0705 283 741**