

SPECIAL SET

PRIMARY SEVEN EXAMINATION

2020

INTEGRATED SCIENCE

Time allowed: 2 hours 15 minutes

Index No.

EMIS No.					PERSONAL NO.		

Candidate's Name

Candidate's Signature

EMIS No.

District Name

Read the following instructions carefully:

1. This paper has two sections: **A** and **B**.

Section **A** has **40** questions and Section **B** has **15** questions

2. Answer **all** questions. **All** answers to both sections **A** and **B** must be written in the spaces provided

3. **All** answers must be written using a **blue** or **black** ball point pen or ink. Any work written in pencil other than graphs and diagrams will **not** be marked

4. Unnecessary **changes** in your work may lead to **loss** of marks

5. Any handwriting that **cannot** easily be read may lead to **loss** of marks

6. Do **not** fill anything in the table indicated: "**For Examiners' Use only**" and boxes inside the question paper.

FOR EXAMINERS' USE ONLY		
Qn. No.	MARKS	EXR'S NO.
1 – 10		
11 – 20		
21 – 30		
31 – 40		
41 – 43		
44 – 46		
47 – 49		
50 – 52		
53 – 55		
TOTAL		

SECTION A: 40 MARKS

1. Define a tuber crop.

.....

2. State how a mushroom obtains its food.

.....

3. Identify any **one** mixture that can be separated using a magnet.

.....

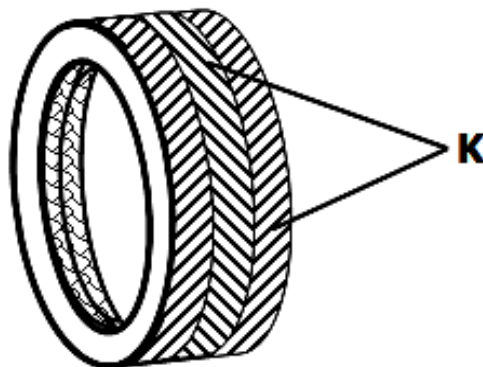
4. Give a reason why proteins should be included in a person's diet.

.....

5. State any **one** characteristic of carnivorous mammals.

.....

The diagram below shows a car tyre. Use it to answer questions **6** and **7**



6. Name the structures labelled **K** on the above car tyre.

.....

7. Give one reason why the above structures are made on car tyres.

.....

8. Write any **one** sign of heat period in a cow.

.....

9. Give any **one** characteristic of flowers pollinated by wind.

.....

10. Identify one importance of regular spreading of beddings in sunshine

.....

11. Write any **one** structural difference between veins and arteries.

.....

.....

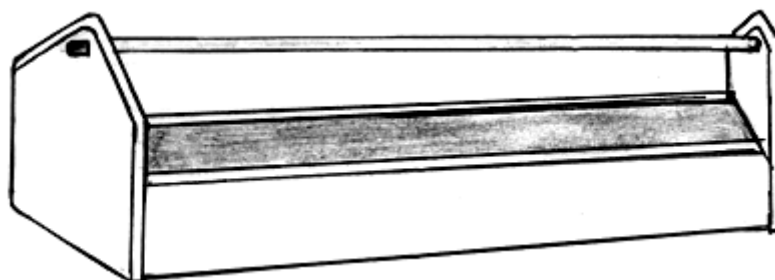
12. Name the element of Primary Health Care (PHC) that is promoted by draining stagnant water from the compound.

.....

13. Identify the process by which oxygen enters from the lungs into the blood stream.

.....

The diagram below shows a wooden structure put in a deep litter house of poultry. Use it to answer questions **14** and **15**.



14. Identify the wooden structure shown above.

.....

15. State the use of the above structure to a poultry farmer

.....

16. Write down any **one** way of preventing food contamination in a home.

.....

17. Explain how paddock grazing helps to control tick borne diseases in livestock.

.....
.....

18. Give any **one** factor which affects the rate of evaporation.

.....

19. Write any **one** health habit that causes damage to the human lungs.

.....

20. Explain why electricians wear rubber gloves when carrying out repairs.

.....

21. Name the type of immunity passed on from mother to a baby through the placenta and breast milk.

.....

22. Identify one way in which prop roots are important to a growing maize plant.

.....

23. Give any **one** negative effect of HIV/AIDS to an individual.

.....

24. Write any **one** secondary sex characteristic in boys.

.....

25. Explain why a feather floats on water.

.....

26. How does the use of solar cookers help to conserve trees in an area?

.....

27.State any **one** danger of floods in the environment.

.....

28.Write any **one** disadvantage of free range system in rearing of goats.

.....

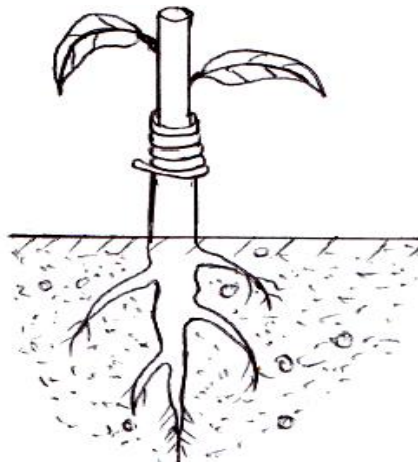
29.Give **one** way in which heat transfer by radiation is useful in our daily life.

.....

30.Explain how echoes are important to a bat during flight at night.

.....

The diagram below shows a method of vegetative propagation. Use it to answer questions **33** and **34**.



31.Identify the method of vegetative propagation shown

.....

32.Name any **one** plant which is propagated using the above method.

.....

33.Give any **one** advantage of breast feeding to a baby.

.....

34.Explain how grass planted on the school compound controls soil erosion?

.....
35. Identify the type of muscles found in the human heart.

.....
36. Mention **one** activity done by crop farmers before planting.

.....
37. Explain the difference between the spread of sleeping sickness and that of malaria

.....
.....
38. Give any **one** role played by local councils (LCs) during immunisation.

.....
39. Name the cattle product used in dairy industries.

.....
40. State any **one** danger of making babies to sleep on a bed wetted with urine.

.....

SECTION B: 60 MARKS

Questions from 41 to 55 carry four marks each

41.a) Name **one** example of exotic rabbit kept in Uganda.

.....

b) List any **two** diseases which attack rabbits.

i)

ii)

c) Write **one** advantage of keeping rabbits over goats and sheep.

.....

42. The diagram below shows a casualty who has just fainted. Study the diagram carefully and answer the questions that follow.



a) Give the term used to describe the person marked **F**.

.....

b) State the cause of the above accident

.....

c) Explain why the legs of the casualty are raised

.....

d) Give the importance of blowing cold air over the casualty above

.....

43. In the table below, **list A** is of types of movable joints and **list B** is of parts of the body.

List A. (types of movable joints)	List B. (parts of the body)
Gliding joints	Elbow
Pivot joints	Wrist
Ball and socket joints	Neck vertebrae
Hinge joints	Shoulder

Select from the table the correct location of a joint and write in the space provided below.

- a) Gliding joints
- b) Pivot joints
- c) Ball and socket joints
- d) Hinge joints

44. a) State the function of each of the following parts of a Ventilated Improved Pit (VIP) latrine.

- i) Screen
- ii) Vent pipe
- b) Give any **two** ways of promoting cleanliness in an ordinary pit latrine.
 - i)
 - ii)

45. a) Name the animal fibre obtained from each of the following

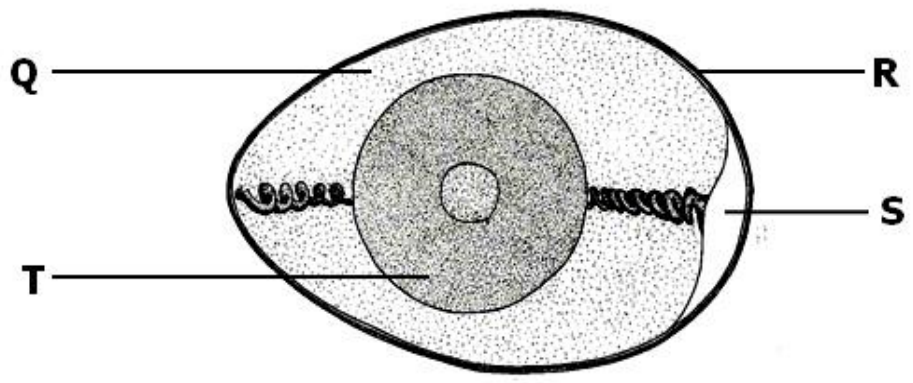
- i) Angora goat
- ii) Merino sheep

b) Apart from being a source of fibre, state **two** other ways in which animals are resources.

- i)

ii)

46. The diagram below shows the inner parts of a fertilised egg of a hen. Study it carefully and answer the questions that follow.



a) Identify the part labelled with letter **Q**.

.....

b) State the function of part labelled **S** and **T**.

i) **S**

ii) **T**

c) Explain why the part labelled **R** should allow some materials pass through it

.....

47. The table below shows disease vectors, germs which they carry and the diseases caused. Study and complete it correctly.

Disease vector	Type of Germ	Disease caused
.....	protozoa	Sleeping sickness
Black fly	Filarial worm
Anopheles mosquito	Malaria
.....	Bacterium	Cholera

48.a) Mention any **two** methods of applying fertilizers in a garden.

- i)
- ii)

b) List any **two** disadvantages of using artificial or inorganic fertilizers.

- i)
- ii)

49.a) Which method of magnetisation requires electric energy?

.....

b) What name is given to the new magnet made using the above method?

.....

c) Write any **two** ways of demagnetising magnets.

- i)
- ii)

50. a) Apart from yeast, mention any other example of fungus.

.....

b) Give any **one** difference between fungi and plants.

.....

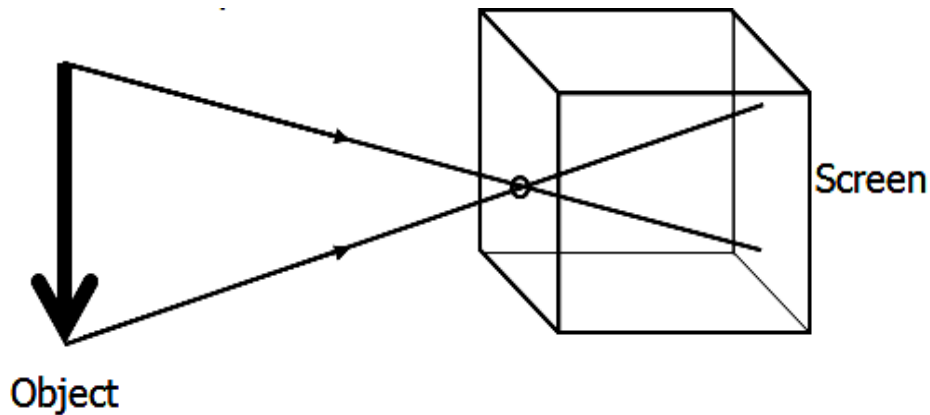
.....

c) Write **two** ways in which yeast is useful to people.

i)

ii)

51. The diagram below is of a pinhole camera. Study it carefully and answer the questions that follow.



a) Label the pin hole with the letter **X**

.....

b) Use a pencil to draw the image formed by the object on the screen

c) Give any **two** characteristics of the image formed on the screen above.

i)

ii)

52. a) List any **two** negative effects of drug abuse to human health

i)

ii)

b) Write any **two** ways of controlling drug poisoning in a family.

i)

ii).....

53.a) Apart from making honey, give any **two** other duties of worker bees in a beehive.

i)

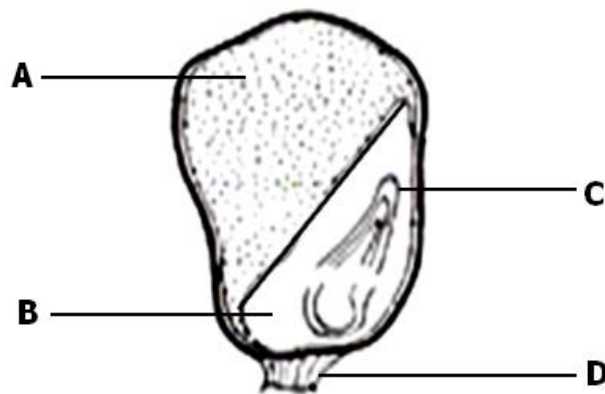
ii).....

b) State any **two** advantages of using modern beehives in bee keeping

i)

ii).....

54.The diagram below show a maize grain. Study carefully and use it to answer the questions that follow



a) Name the parts labelled **C** and **D**.

i) **C**.....

ii) **D**.....

b) State the function of part labelled **A** and **B**.

i) **A**

ii) **B**

55.a) Give the function of each of the following blood components.

i) White blood cells

.....

ii) Blood platelets

.....

b) State any **two** ways of maintaining the heart in a healthy working condition.

i)

ii)

END