

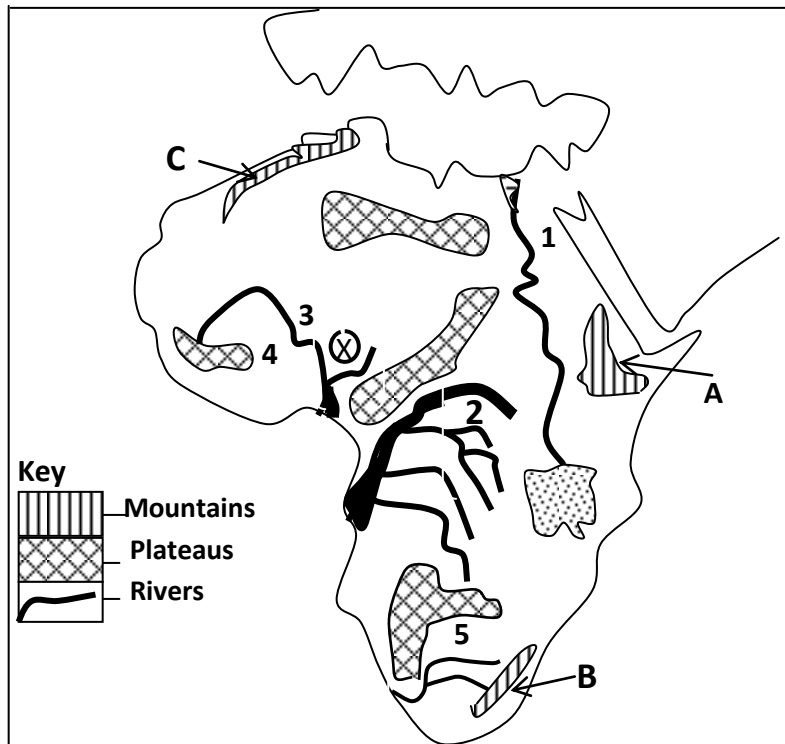
273/2
Geography
Paper 2
2½ hours

STANDARD HIGH SCHOOL ZZANA S.3 GEOGRAPHY 2 SET TWO 2020

Instructions:

- Answer a total of four questions
- Choose two questions from part I and two questions from part II
- In part II not more than one question should be answered from one region
- Forward scanned answer sheets to **stahiza2020@gmail.com**

PART 1: Study the map of Africa below and answer the questions that follow;



- (a) Name the
- (i) Mountains C, A and B
 - (ii) Plateaus 4 and 5
 - (iii) Rivers 1, 2 and 3
- (8 marks)
- (b) Explain the formation of mountain marked B named in a (i) (5 marks)
- (c) Outline the activities carried out in the mountain areas of Africa. (5 marks)
- (d) Describe the importance of the mountains of Africa. (5 marks)
- (e) Outline the problems facing people living in mountain areas of Africa. (2 marks)

2. Study the table showing sugarcane production in the republic of South Africa from Natal

2

Table II sugarcane production in Natal (2005 – 2010)

Year	Sugarcane production in metric tons
2005	12,400,000
2006	13,500,000
2007	20,000,500
2008	20,800,000
2009	19,300,000
2010	18,680,000

Source: World bank, Development indicators 2012 pg 147.

- (a) (i) Draw a line graph showing the trend of sugarcane production in Natal. (8 marks)
(ii) Describe the trend of sugarcane production in Natal shown in the graph (2 marks)
- (b) Describe the factors which have led to sugarcane production in Natal (6 marks)
- (c) Outline
(i) The commodities got out of sugarcane in South Africa. (2 marks)
(ii) The effects of sugarcane growing on the physical environment in Natal (3 marks)
- (d) Explain the contribution of sugarcane growing to the people of Natal in the republic of South Africa. (4 marks)
- 3.
- (a) Name any two minerals mined from Egypt (2 marks)
- (b) Describe the factors that have favoured the mining of minerals named in (a) above (8 marks)
- (c) Explain the;
(i) Contribution of the mining sector to the people of Egypt. (6 marks)
(ii) Effects of mining on the natural environment in Egypt. (5 marks)
(iii) What are the problems faced by the mining sector in Egypt (4 marks)
4. What is meant by a Rift valley? (2 marks)
- ii) Name any two found in the rift valley (2 marks)
- b) Describe the processes for the formation of the African rift valley (8 marks)
- c) Explain the importance of the Rift valley to the economic development of African countries (7 marks)
- d) What are the problems faced by people living in the rift valley (6 marks)

PART II: STUDIES IN DEVELOPMENT:

(choose two questions from this **PART**)

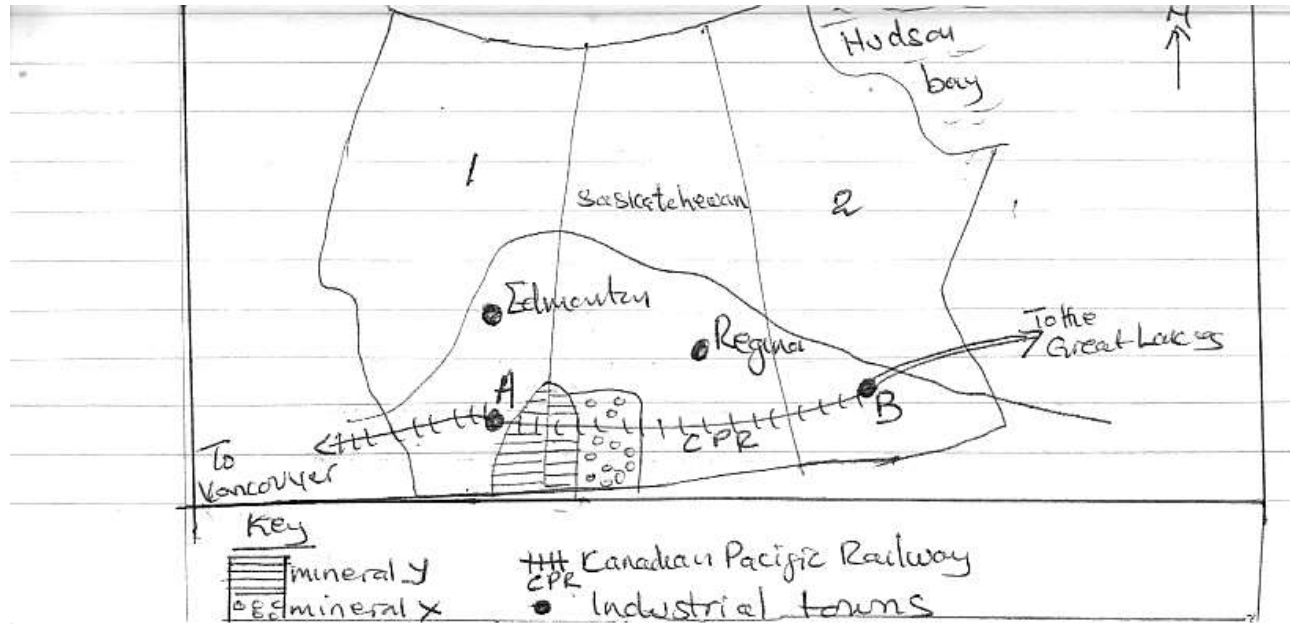
REGION I: NORTH AMERICA

5. (a) Draw a sketch map of New York Port and on it mark and name;
(i) Islands: Manhattan and Bronx
(ii) Bays: Newark and Upper bay
(iii) Rivers: Harlem and Hudson
(iv) John F Kennedy Airport. (9 marks)

- (b) Identify the types of transport used in New York port (3 marks)
 (c) Describe the factors which led to the development of New York port (6 marks)
 (d) Outline the
 (i) Problems facing New York port. (5 marks)
 (ii) Measures taken to solve the problems facing New York port (2 marks)

6. Study the sketch map of the Canadian prairies and answer the following questions

THE INDUSTRIAL TOWNS IN THE CANADIAN PRAIRIES



- (a) Name the
 (i) Provinces marked 1 and 2
 (ii) Industrial towns marked A and B
 (iii) Mineral in place y and x (6 marks)
- (b) Identify any two industries found in the industrial towns named in a (ii) (4 marks)
 (c) Describe the factors which have favoured the growth of industries in the industrial towns of the Canadian prairies. (7 marks)
 (d) Explain the
 (i) Contributions of the industries on the Canadian prairies to the people of Canada. (4 marks)
 (ii) Problems caused by industries to the environment of the Canadian prairies (4 marks)

7. Study the climatic table below and answer the questions that follow

Vicksburg 32°M

Total: 1326mm

Month	J	F	M	A	M	J	J	A	S	O	N	D
Temp °C	8	11	14	18	23	26	27	27	24	18	15	9
Rain mm	134	124	140	127	109	102	117	86	84	67	109	127

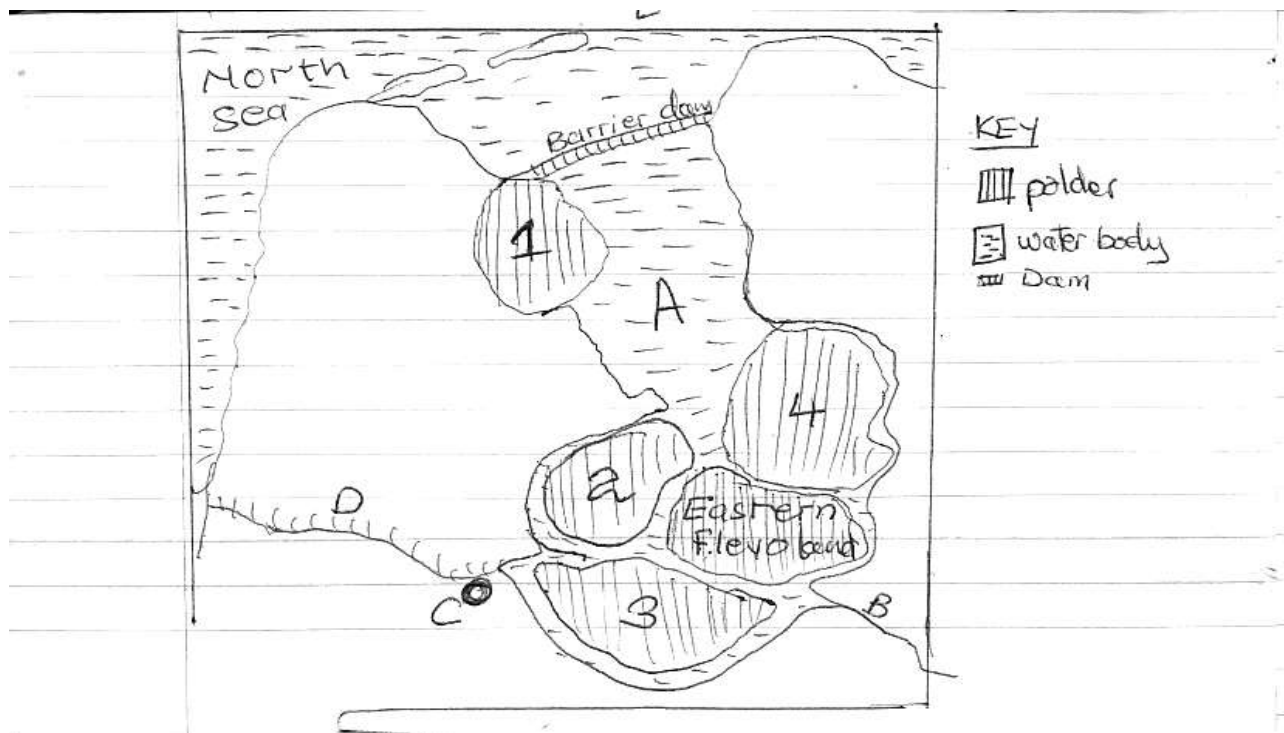
- (a) Draw a line and bar graph showing rainfall and temperature for Vicksburg. (7 marks)
 (b) Calculate
 (i) Mean annual rainfall (2 marks)

- (ii) Mean temperature (2 marks)
- (iii) Temperature range for Vicksburg ⁴ (2 marks)
- (c) Explain the problems which led to the changes in the cotton growing region in the South of U.S.A (6 marks)
- (d) Identify
 - (i) Three states of the New South (3 marks)
 - (ii) The changes made in the New South. (3 marks)

REGION II: RHINE LANDS

8. (a) Draw a sketch map of Switzerland and on it mark and name the
- (i) Physical regions: Alps and Swiss plateau
 - (ii) Rivers: Rhone, Rhine and Ticino
 - (iii) Tourist resorts: Zermatt, and Lugano
 - (iv) St Gotthart mountain pass and
 - (v) Lake Geneva. (10 marks)
- (b) Identify any two tourist attractions found in the;
- (i) Swiss Alps
 - (ii) Swiss plateau (4 marks)
- (c) Explain the contribution of the tourist industry in the development of Switzerland. (6 marks)
- (d) Outline the problems facing the tourism industry in Switzerland. (5 marks)

9. Study the sketch map of the Zuider Zee land reclamation scheme in Netherlands and answer the questions that follow.



- (a) Name the
- Polder marked 1,2,3 and 4
 - Water body A and B
 - Town C
 - Canal D
- (8marks)
- (b) Describe the factors which favoured land reclamation in Netherland. (7marks)
- (c) Explain the benefits acquired from reclaimed land by the people of Netherland (6 marks)
- (d) Outline the problems facing reclaimed land in Netherlands. (4marks)

10. Study the table showing arable products in Belgium in 2000;

Arable product	Output (tons)
Wheat	1,495
Barley and fodder	368
Corn	253
Spelt oats, rye,	184
Other grains	23
Total	2323

- (a) Draw a pie chart to show the Arable products of Belgium in 2000 (10 marks)
- (b) Describe the conditions which have led to the development of Arable farming in Belgium. (5 marks)
- (c) Explain the contribution of arable farming to the people of Belgium. (6 marks)
- (d) Outline the problems facing arable farming in Belgium. (4 marks)

REGION 111 CHINA

11. a) Draw a sketchmap of China and on it mark and name;
6

i) Rivers: Haung – he and Chang Jiang

ii) Ports: Kowloon and Shanghai

iii) The grand Canal (06 Marks)

b) Outline the;

i) Problems facing inland waterways in China (06 marks)

ii) Steps being taken to improve inland waterways. (04 marks)

c) Explain the contribution of inland waterways to the development of China. (05 marks)

d) State any two

i) exports;

ii) imports, handled by the ports named in a(ii) above. (04 marks)

12. Study Table IV below showing China's export by value in 2005 / 2006 and answer questions that follow.

Table IV China : Exports by value (2005/06)

Commodity	% of total export value
Food	03
Agricultural raw materials	00
Fuels	02
Ores and metals manufacturers	92
Others	01
Total export value in millions US\$	968,936

Source: world Development Indicators (2008), The World Bank, P210

- a) Draw a pie chart to show the relative importance of each export commodity. (08 marks)
 - b) Calculate the value obtained from the exportation of;
 - i) Manufactured goods
 - ii) Food (04 marks)
 - c) Explain the conditions which have led to the exportation of more manufactured goods in China. (07 marks)
 - d) i) mention any one Port through which China exports her goods. (01 mark)
 - ii) Outline the problems faced by China's export trade. (05 marks)
13. (a) Mention any **two**
- (i) Agricultural communes (2 marks)
 - (ii) Land use types found on a communes in China (2 marks)
- (b) Describe the characteristics of communes in China. (6 marks)
- (c) Explain the;
- (i) advantages
 - (ii) disadvantages of communal farming in China (4 marks)
- (d) Outline the steps being to improve communal farming in China (5 marks)

END